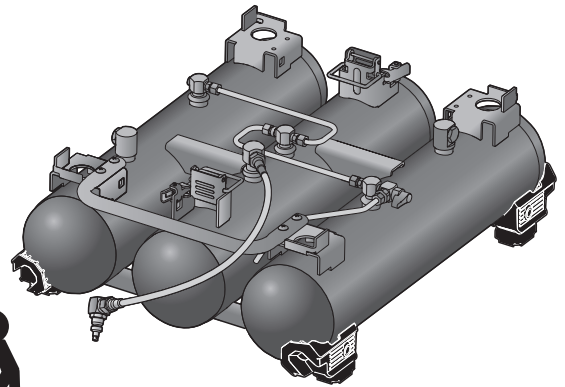


HOW TO INSTALL OPTIONAL 1320E TANK

! WARNING

- This tank is for AKHL1320E only.
- Do not connect to anything other than AKHL1320E.
- Please read the AKHL1320E instructions carefully before use.
- **CARRY THE COMPRESSOR AND TANK IN THE FOLLOWING PROPER MANNERS**
- **AKHL1320E:** Hold the compressor grips with both hands.
- **With the optional AKTH15 air tank:** Carry the compressor by having two people hold each side of the compressor grips.



Do not turn the compressor over or lift it with a hook or rope.
AKTH15: Hold the air tank grips. (See Fig.O)

Installation

- 1 (Fig.A,B) Turn off the power switch of the compressor and unplug the power cord from the electrical outlet.
- 2 (Fig.C) Open the drain cock and drain compressed air from the tank.
- 3 (Fig.D,E) Remove the stop plug from the compressor clockwise and mount by turning the air chuck 44K that comes with the AKTH15 counterclockwise.
- 4 (Fig.F) Keep the latch open.
- 5 (Fig.G) Align the compressor and the AKTH15 as shown in the illustration.
- 6 (Fig.H) Mount the rubber feet of the compressor on the holders of the AKTH15.
- 7 (Fig.I) Attach and secure the front and rear latches of AKTH15 to the hook of the compressor. Ensure that both of the latches are firmly in place.
- 8 (Fig.J) Connect the connector of the flexible pipe to the air chuck 44K. When connecting, please press the air plug strongly because the pressing is in two stages.
- 9 (Fig.K,L) Make sure that the front and rear latches, and the air chuck 44K are not loose, plug the compressor's power cord in the electric outlet and turn the compressor's power switch on.
- 10 Before operating the machine, be sure to carry out the "Inspection and checkup prior to operation" described on page 17 of the AKHL1320E manual.

Removal

- 1 (Fig.A,B) Turn off the power switch of the compressor and unplug the power cord from the electrical outlet.
- 2 (Fig.C) Open the drain cock of the compressor and optional air tank and drain compressed air from the tank.
- 3 (Fig.M) Disconnect the connector of the flexible pipe from the air chuck 44K. Turn the sleeve of the air chuck 44K counterclockwise, and push the sleeve to remove the air plug.
- 4 (Fig.N) Push in the locks on the front and rear latches of the AKTH15, and remove them from the hooks.
- 5 (Fig.G) Lift and remove from AKTH15.
- 6 (Fig.K,L) Plug the compressor's power cord in the electric outlet and turn the compressor's power switch on.
- 7 Before operating the machine, be sure to carry out the "Inspection and checkup prior to operation" described on page 17 of the AKHL1320E manual.



Fig.A

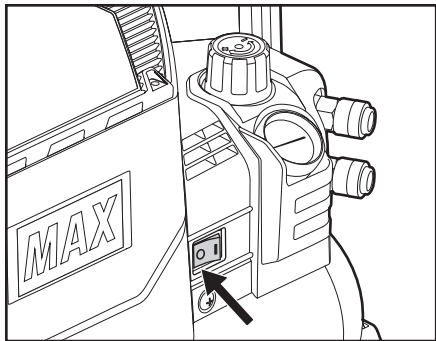


Fig.B

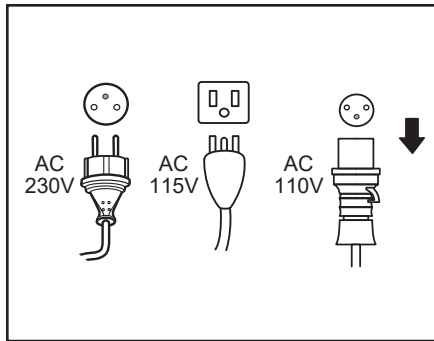


Fig.C

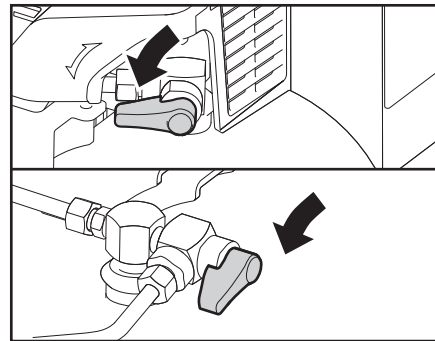


Fig.D

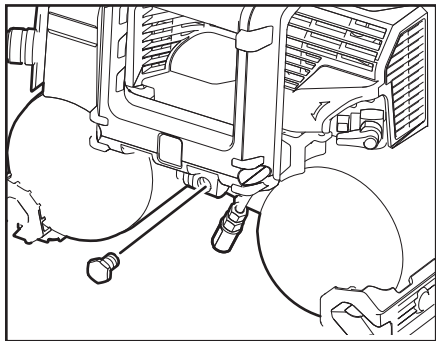


Fig.E

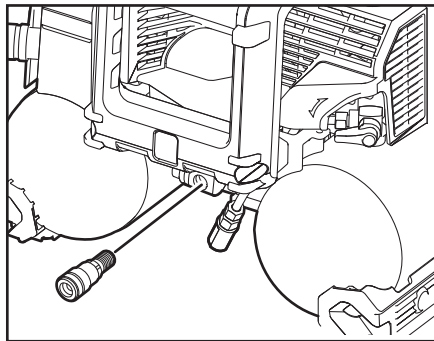


Fig.F

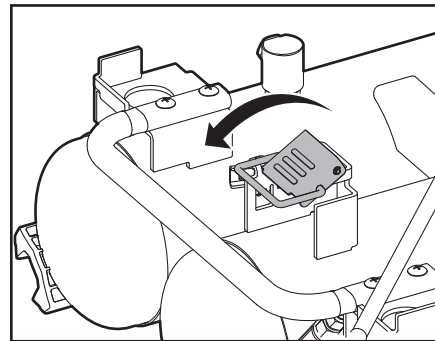


Fig.G

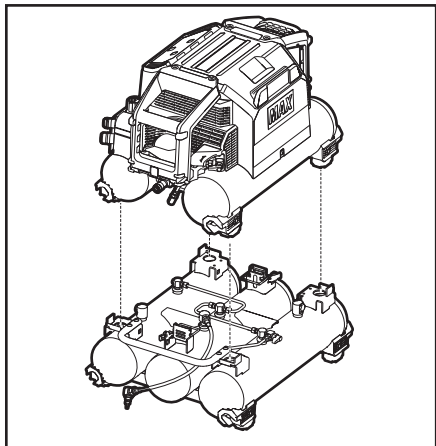


Fig.H

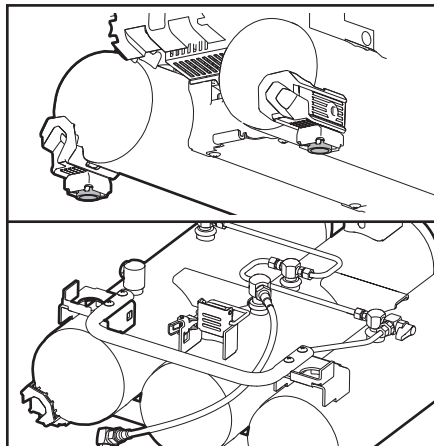


Fig.I

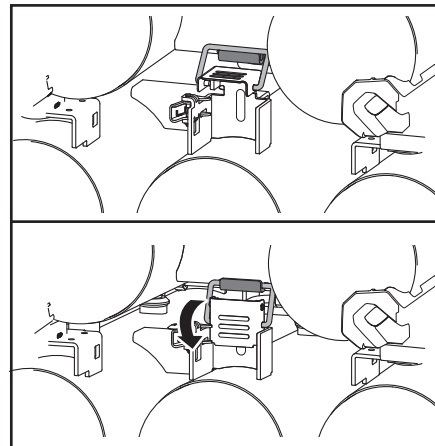


Fig.J

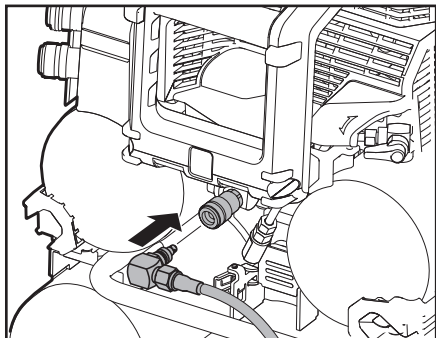


Fig.K

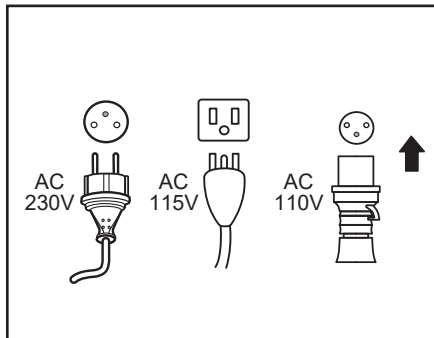


Fig.L

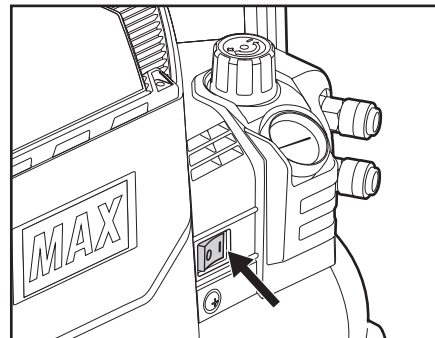


Fig.M

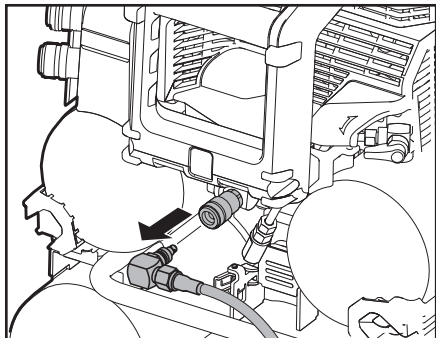


Fig.N

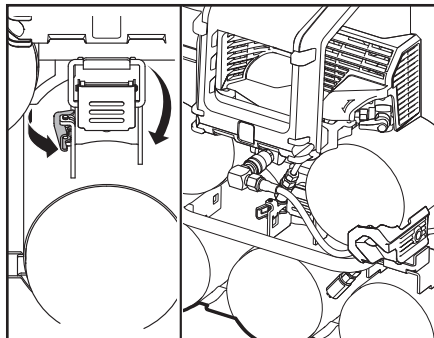
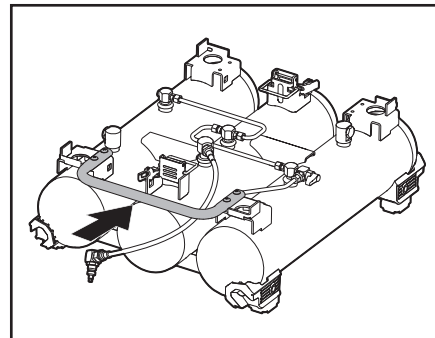


Fig.O



AKTH15

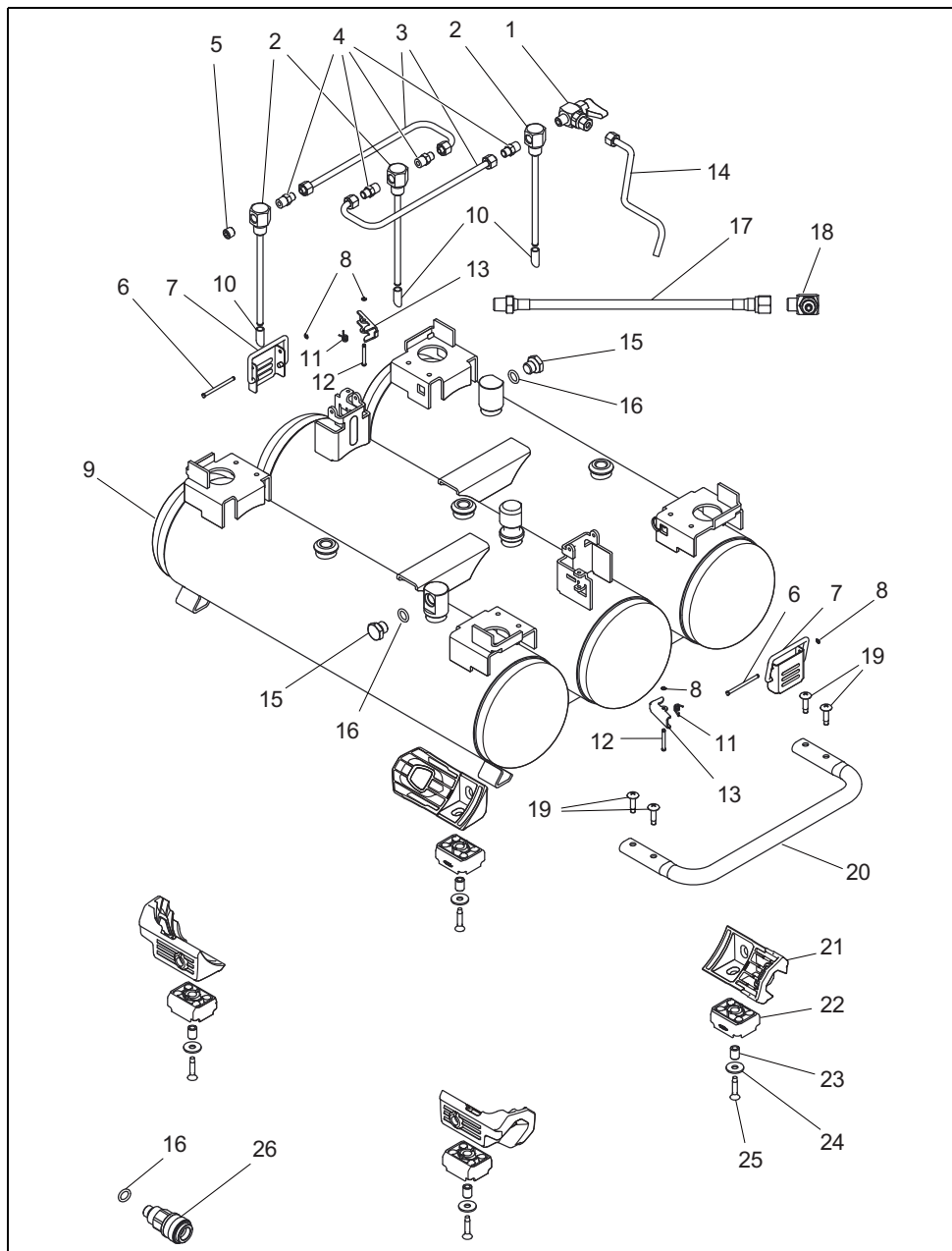
EXPLODED
VIEW AND SPARE
PARTS LIST

SCHEMA ECLATE ET
LISTE DES PIÉCES
DE REMPLACEMENT

DESPIECE DE LA
MAQUINA Y LISTA
DE RECAMBIOS

EINZELTEILDAR-
STELLUNG UND
ERSATZEILLISTE

ESPLOSO DEI
COMPONENTI ED
ELENCO DELLE
PARTI DI RICAMBIO



AKTH15

ITEM NO.	PART NO.	MATERIAL	ENGLISH	FRAANÇAIS	ESPAÑOL	DEUTSCH	ITALIANO
1	AK14179	-	DRAIN COCK	ROBINET DE PURGE	GRIFO DE DRENAJE	ABLASSHAHN	RUBINETTO DI SCARICO
2	AK70808	Aluminium, Copper alloy, Rubber	DRAIN NIPPLE UNIT T16	UNITÉ DE MAMELON DE PURGE T16	UNIDAD DE DRENAJE T16	ABLASSNIPPEL-EINHEIT T16	UNITÀ RACCORDO FILETTATO DI SCARICO T16
3	AK81402	Aluminium, Copper alloy	DRAIN CONNECTING PIPE UNIT T16	UNITÉ DE TUYAU DE RACCORDEMENT DE PURGE T16	UNIDAD DE TUBERÍA DE CONEXIÓN DE DRENAJE T16	ABLASSVERBINDUNG-SROHR-EINHEIT T16	UNITÀ TUBO DI COLLEGAMENTO SCARICO T16
4	TT07018	Copper alloy	JOINT MH-1061-OM	JOINT MH-1061-OM	JUNTA MH-1061-OM	VERBINDUNG MH-1061-OM	GIUNTO MH-1061-OM
5	AK11252	Steel	HEX SCREW R1/8	ÉCROU HEXAGONAL R1/8	TORNILLO HEXAGONAL R1/8	SECHSKANTMUTTER R1/8	VITE ESAGONALE R1/8
6	FF41880	STEEL	STEP PIN 1880	BOULON À GRADINS 1880	PERNO ESCALONADO 1880	STUFENBOLZEN 1880	PERNO SCALARE 1880
7	AK70821	Stainless steel	27L LATCH UNIT	UNITÉ DE LOQUET 27L	UNIDAD DE CIERRE 27L	27L VERSCHLUSSEINHEIT	UNITÀ FERMO 27L
8	JJ10109	Steel	E RETAINING RING	ANNEAU DE RETENUE E	ANILLO DE RETENCIÓN E	E SICHERUNGSRING	ANELLO DI TENUTA E
9	AK70850	Aluminium	TRIPLE TANK UNIT TH15	UNITÉ À TROIS RÉSERVOIRS TH15	UNIDAD DE DEPÓSITO TRIPLE TH15	DREIFACHBEHÄLTER-EINHEIT TH15	UNITÀ SERBATOIO TRIPLA TH15
10	AK14180	Rubber	DORAIN TUBE	TUBE DORAIN	TUBO DORADO	ABLASSSCHLAUCH	TUBO DI SCARICO
11	KK33251	Steel	TORSION COIL SPRING	RESSORT HÉLICOÏDAL DE TORSION	MUELLE HELICOÏDAL DE TORSIÓN	TORSIONSPIRALFEDER	MOLLA A TORSIONE
12	FF41881	Steel	STEP PIN 1881	BOULON À GRADINS 1881	PERNO ESCALONADO 1881	STUFENBOLZEN 1881	PERNO SCALARE 1881
13	AK16141	Steel	27L LATCH C	LOQUET 27L C	CIERRE C 27L	27L VERSCHLUSS C	FERMO C 27L
14	AK81427	Aluminium, Copper alloy	RELEASE PIPE UNIT TH 15	UNITÉ DE TUYAU D'ÉVACUATION TH 15	UNIDAD DE TUBERÍA DE DESCARGA TH 15	AUSLASSROHREINHEIT TH 15	UNITÀ TUBO DI RILASCIO TH 15
15	AK14678	Steel	DETENT PLUG M12x1.5 LEFT	BOUCHON DE DÉTENTE GAUCHE M12x1,5	TACO DE RETENCIÓN M12x1,5 IZQUIERDO	SPERRSTOPFEN M12x1,5 LINKS	TAPPO DI RITEGNO M12x1,5 SINISTRO
16	HH11132	Rubber	O RING 1 A P10A	JOINT TORIQUE 1 A P10A	O ANILLO 1 A P10A	O-RING 1 A P10A	GUARNIZIONE CIRCOLARE 1 A P10A
17	AK16114	-	FLEXIBLE PIPE 1310	TUYAU FLEXIBLE 1310	TUBERÍA FLEXIBLE 1310	FLEXIBLES ROHR 1310	TUBO FLESSIBILE 1310
18	AK70702	Steel, Copper alloy	ELBOW MALE SCREW PLUG 44K UNIT	UNITÉ DE VIS À FICHE COUDÉE MÂLE 44K	UNIDAD DE TAPÓN DE ROSCA MACHO 44K	WINKELSTECKEREINHEIT 44K MIT AUSSENGEWINDE	UNITÀ TAPPO A VITE MASCHIO A GOMITO 44K
19	AA34808	Steel	SCREW 5x20	VIS 5x20	TORNILLO 5x20	SCHRAUBE 5x20	VITE 5x20
20	AK16147	Aluminium	GRIP 1310-27L	POIGNÉE 1310-27L	AGARRE 1310-27L	GRIF 1310-27L	IMPUGNATURA 1310-27L
21	AK16129	PA	CORNER PROTECTOR 1310	PROTECTEUR D'ANGLE 1310	PROTECTOR DE ESQUINAS 1310	ECKENSCHUTZ 1310	PROTEZIONE DEGLI ANGOLI 1310
22	AK16127	Rubber	RUBBER FOOT 1310	PIED EN CAOUTCHOUC 1310	PATA DE GOMA 1310	GUMMFUSS 1310	PIEDINO IN GOMMA 1310
23	AK16128	Aluminium	RUBBER FOOT COLLAR 1310	COLLIER DE PIED EN CAOUTCHOUC 1310	COLLAR DE PATA DE GOMA 1310	GUMMIFUSSRING 1310	COLLARE PIEDINO IN GOMMA 1310
24	EE39193	Steel	PLANE WASHER 6.2x18x1.6	RONDELLE PLATE 6.2x18x1.6	ARANDELA PLANA 6.2x18x1.6	GUMMIFUSSMANSCHETTE 6.2x18x1.6	RONDELLA PIANA 6.2x18x1.6
25	AA32803	Steel	S-TITE SCREW 5x25	VIS S-TITE 5x25	TORNILLO S-TITE 5x25	S-TITE-SCHRAUBE 5x25	VITE S-TITE 5x25
26	TT05029	-	AIR CHUCK 44K PURGE	PURGE DE MANDRIN PNEUMATIQUE 44K	PURGA DE MANDRIL NEUMÁTICO 44K	LUFTANSCHLUSS 44K ZUR REINIGUNG	RUBINETTO ARIA 44K SCARICO

